



gary's

WORKWEAR

X **Barco**TM
uniforms

GREY'S ANATOMYTM
PROFESSIONAL WEAR
BY BARCO

SKECHERSTM
by BarcoTM

garysworkwear.com

BARCO BRANDS

GREY'S ANATOMY™ BY BARCO



Spandex Stretch



Soil Release



Extreme Comfort



Moisture Wicking



Wrinkle Release



360° Spandex Stretch



Recycled Polyester Blend



Moisture Wicking

BARCO®



5 Recycled Bottles Per Garment



4-Way Stretch



Anti Static



Moisture Wicking

SKECHERS™ BY BARCO



Eco-Friendly Fabric



4-Way Stretch



Comfort Included



Moisture Wicking



360° Spandex Stretch



Extreme Comfort



Moisture Wicking

INDEX

SKT193	3
SKP572	3
SK0112	3
SKT147	4
SKP552	4
Sk101	4
SKT220	5
SKP668	5
GRST124	7
GRSP537	7
GRST079	7
GRSP550	7
GSST179	8
GSSP649	8
GSST180	9
GSSP625	9
5105	10
BOP597	10

HOW TO MEASURE

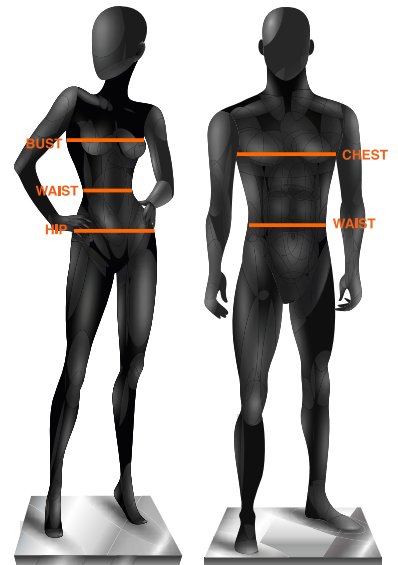
Take all measurements over undergarments using standard measuring tape held in a relaxed straight line.

Chest/Bust: Place measuring tape under the arms to measure the distance around the shoulder blades and the fullest part of the bust/chest. Do not hold the tape too tight.

Waist: Place measuring tape around the natural waistline.

Inseam: Measure from the crotch to the desired length of the pant, breaking at the top the shoe and just above the heel in the back. Appropriate shoes be worn.

Hip: Stand with feet a few inches apart and measure around the fullest part of your hips wearing your undergarments.



FIT SIZE GUIDE BASED ON YOUR BODY MEASUREMENTS

Women's/Underscrubs/Lab Coats

Size	XXS	XS	S	M	L	XL	2XL	3XL	4XL	5XL
	00	0-2	4-6	8-10	12-14	16-18	20-22	24-26	28-30	32-34
Bust	31-32	33-34	35-36	37-39	40-42	43-45	46-48	50-52	54-56	58-60
Waist	23½-24½	25½-26½	27½-28½	29½-31½	32½-34½	35½-37½	39-41	43-45	47-49	51-53
Hip	34-35	36-37	38-39	40-42	43-45	46-48	49-51	53-55	57-59	61-63

Men's/Underscrubs

Size	XXS	XS	S	M	L	XL	2XL	3XL	4XL	5XL
	29-31	32-34	35-37	38-40	42-44	46-48	50-52	54-56	58-60	62
Chest	30-32	33-35	36-38	39-41	43-45	47-49	51-53	55-57	59-61	63-65
Waist	23½-25½	26½-28½	29½-31½	32½-34½	36½-38½	40½-42½	44½-46½	48½-50½	52½-54½	56½-58½
Hip	30½-31½	33½-34½	36½-37½	38½-40½	42½-44½	46½-48½	49-51	53-55	57-59	61-63

Men's Lab Coats

Size	32	34	36	38	40	42	44	46	48	50	52	54	56
Chest	32	34	36	38	40	42	44	46	48	50	52	54	56
Waist	26	28	30	32	34	36	38	40	42	44	46	48	50



SKT193 Thesis Top
SKECHERS™ BY BARCO

3-pocket, rounded neckline, jersey knit neck band, badge loop, inset chest pocket with pen slot, waist patch pockets, high-low hem top
 Sizes: XS - 5XL CB: 29.5"
 Color shown: 10 White



41 Navy

All Styles Main Fabric

54% Polyester/40% Recycled Polyester/6% Spandex

SKP572 Structure Jogger
SKECHERS™ BY BARCO

3-pocket, self full encased elastic waistband with drawcord, front fly, velcro closure single patch cargo pocket, rib cuff jogger
 Sizes: XS - 3XL, I: 29"
 SS - XLS, I: 27"
 Leg Opening: 4.5"
 Color shown: 40 Ciel



JOGGER LEG

Knit Accents Content:
 94% Polyester/6% Spandex

08 New Royal

41 Navy

All Styles Main Fabric

54% Polyester/40% Recycled Polyester/6% Spandex



SK0112 Structure Top
SKECHERS™ BY BARCO

1-pocket, crossover V-neck top with chest pocket, full running side step-cut side vent detail
 Sizes: XS - 5XL, CB: 29.5"
 Color shown: 471 Moonstruck



08 New Royal

All Styles Main Fabric

54% Polyester/40% Recycled Polyester/6% Spandex

SKT147Dignity Tuck-In Top

SKECHERS™ BY BARCO

1-pocket, V-neck with contrast rib, front yoke seam with badge loop, single chest pocket, high-low hem tuck-in top

Sizes: XXS - 5XL, CB: 26"

Color shown:

2409 Light Jade



328 Bahama

SKP552 Theory Jogger

SKECHERS™ BY BARCO

4-pocket, drawcord waistband mid-rise, with double cargo pocket and pen slot

Sizes: XXS - 5XL, I: 29"

XXSP - XLP, I: 27"

XST - XLT, I: 31"

Leg Opening: 4.5"

Color shown: 39 Teal



Knit Accents Content:

88% Polyester/12% Spandex

10 White

41 Navy

328 Bahama

471 Moonstruck

All Styles Main Fabric

54% Polyester/40% Recycled Polyester/6% Spandex



SK101 Breexe Top

SKECHERS™ BY BARCO

3-pocket, virtual V-neck, shaped hem, detailed cover stitching, contrast back neck binding

Sizes: XXS - 5XL, CB: 25.5"

Color shown: 328 Bahama



10 White

41 Navy

471 Moonstruck



SKT220 Serene Top

**SKECHERS SLIP-INS™
SCRUBS BY BARCO**

3-pocket gusset v-neck, front princess seams with on-seam zipper pocket, angled top-entry patch waist pockets, shoulder Steel badge loop, shirt tail hem top

Sizes: *XXS - 5XL, CB: 25.5"*

Color shown:

2396 Deep Magenta



01 Black

18 Pewter

41 Navy

All Styles Main Fabric

86% Nylon/ 14% Spandex



SKP668 Reach Pant

**SKECHERS SLIP-INS™
SCRUBS BY BARCO**

4-pocket Shirred elastic waistband with tunneled drawcord, slanted front pockets with shadow top stitching, welt cargo and welt back pocket, slim straight pant

Sizes: *XXS-5XL, I: 31"*

XXSP-2XLP, I: 29"

XST-XLT, I: 33.5"

Leg Opening: 7.75"

Color shown: 01 Black



STRAIGHT LEG

01 Black

18 Pewter

41 Navy

All Styles Main Fabric

86% Nylon/ 14% Spandex



SKECHERS
Slip-ins
SCRUBS
by Barco



GREY'S ANATOMY™

abc signature

© ABC Signature

PROFESSIONAL WEAR
BY BARCO

+ SPANDEX STRETCH

GRST124 Carly Top

GREY'S ANATOMY™ BY BARCO
• SPANDEX STRETCH

3-pocket, sport neck, rib knit front and back panels, exposed zipper pocket, shirt tail hem
Sizes: XXS - 3XL, CB: 25.5"
Color shown: 40 Ciel

Knit Accent Content:
94% Polyester / 6% Spandex



ANTIMICROBIAL

- 10 White
- 65 Wine
- 312 Olive

GRSP537 Eden Jogger

GREY'S ANATOMY™ BY BARCO
• SPANDEX STRETCH

5-pocket, knit rib drawcord waistband, zipper front pockets, double single cargo, ribbed cuff jogger
Sizes: XXS - 3XL, I: 29"
XXSP - 2XLP, I: 27"
XST - XLT, I: 31"
Leg Opening: 4.25"
Color shown: 312 Olive

Knit Accent Content:
94% Polyester / 6% Spandex



- 10 White
- 65 Wine
- 312 Olive

GRST079 Murphy Top

GREY'S ANATOMY™ BY BARCO
• SPANDEX STRETCH

2-pocket, V-neck shaped chest pocket, zipper sleeve pocket top
Sizes: XS - 5XL, CB: 29"
Color shown: 23 Indigo



ANTIMICROBIAL

- 10 White
- 65 Wine
- 312 Olive

GRSP550 Murphy Jogger

GREY'S ANATOMY™ BY BARCO
• SPANDEX STRETCH

5-pocket, rib knit with plush elastic embedded waistband, two-tone drawcord, front zipper fly, zipper front pockets, angled single double cargo pocket, single back pocket, rib knit cuff jogger
Sizes: XS - 5XL, I: 29"
XSS - 2XLS, I: 27"
XST - XLT, I: 31"
Leg Opening 5.25"
Color shown: 40 Ciel
Knit Accents Content:
94% Polyester / 6% Spandex



ANTIMICROBIAL

- 10 White
- 65 Wine
- 312 Olive

All Styles Main Fabric

74%Polyester/23%Rayon/3&Spandex twill



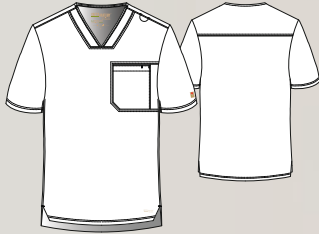
gary's x **Barco™**
WORKWEAR uniforms



GSST179 Journey Top

GREY'S ANATOMY™
BY BARCO EVOLVE STRETCH

1-pocket, V-neck with piped edge finish, badge loop, inset chest pocket, high-low hem with notched side seam top
Sizes: XS - 5XL, CB: 29"
Color shown: 2348 Fern



01 Black

08 New Royal

10 White

GSSP649 Highland Pant

GREY'S ANATOMY™
BY BARCO EVOLVE STRETCH

5-pocket, textured plush elastic waistband with two-way drawcord, on-seam front pockets with shadow top stitching, inset cargo pocket with pen slot, inner thigh gusset, double back pocket slim straight pant
Sizes: XS - 5XL, I: 32"
XSS - 2XLS, I: 30"
XST - XLT, I: 34"
Leg Opening: 7.5"
Color shown: 10 White



STRAIGHT LEG

01 Black

08 New Royal

10 White

CiCLO
FUNCTIONAL. SENSIBLE. SUSTAINABLE.

All Styles Main Fabric

48% CiCLO Polyester / 44% Recycled Polyester / 8% Spandex

GREY'S ANATOMY™

abc signature
©ABC Signature

PROFESSIONAL WEAR
BY BARCO

EVOLVESTRETCH





GSST180 Rhythm Top

GREY'S ANATOMY™
BY BARCO EVOLVESTRETCH

2-pocket, V-neck with piped edge finish, inset waist pockets, pen pocket
Sizes: XXS - 5XL, CB: 25.5"
Color shown: 2348 Fern



01 Black

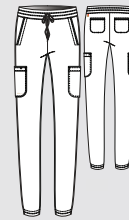
08 New Royal

10 White

GSSP625 Terra Jogger

GREY'S ANATOMY™
BY BARCO EVOLVESTRETCH

6-pocket, encased elastic waistband with drawcord, mid-rise, front pockets with piped edge finish, double cargo pocket, elastic cuff jogger
Sizes: XXS - 5XL, I: 29"
XSP - 2XLP, I: 27"
XST - XLT, I: 31"
Leg Opening: 4.75"
Color shown: 37 Hunter



**MID-RISE
JOGGER LEG**

01 Black

08 New Royal

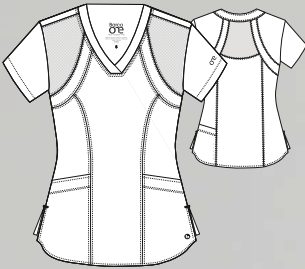
10 White





5105 Racer Top
BARCO ONE

4-pocket, V-neck with princess seaming and perforated panel details in front and back
Sizes: XXS - 5XL, CB: 25.5"
Color shown: 40 Ciel



08 New Royal
23 Indigo

BOP597 Uplift Pant

5-pocket, knit waistband with drawcord, front and back welt pockets, single double cargo pocket, perforated hip and leg panels.
Sizes: XXS - 5XL, I: 30"
XXSP - XLP, I: 28"
XXST - XLT, I: 32"
Leg Opening: 6.75"
Color shown: 328 Bahama

Knit Accents Content:
88% Polyester/12% Spandex



**MID-RISE
 SLIM LEG**

08 New Royal
23 Indigo



All Styles Main Fabric
50% Polyester/43% Recycled Polyester/7% Spandex



garysworkwear.com



gary's

WORKWEAR

X **Barco**TM
uniforms



8429935635088

GARY'S WORKWEAR

The total or partial reproduction is forbidden of this catalogue, as well as its treatment of any form or by any means without the express written permission of the company copyright holder.